

ORION™

LONG RANGE THERMAL IMAGER

The Orion is an industry leading long-range thermal imager that can see in complete darkness and through a multitude of environmental conditions including smoke, rain, snow, dust and dense fog. Although the Orion is based on the same Forward Looking InfraRed (FLIR) technology developed for the U.S. Military, the Orion vaults ahead of conventional FLIR capabilities through the innovative use of new and proprietary technology. VisionSense™ combines video feeds from both a visible light (CCD) camera and an infrared camera. It offers user-controlled, customized real time mixing and merging of the two visual sources. This generates the ability to penetrate glare, as well as see through windows, glass or water. These elemental challenges are highly problematic for conventional FLIR cameras.

The Orion is ideal for both day and night perimeter security, border surveillance and DHS/DOD applications. It offers the best range performance in its class by boasting a continuous 100-550mm optical zoom lens. Featuring a sleek integrated pan and tilt design, the camera is capable of continuous 360° panning and withstanding temperatures ranging from -40° to +60°C. An external heater is available for extreme temperature situations. The ruggedized housing is environmentally sealed to meet NEMA 4X and IP66 specifications.

Out of the box, the Orion is ready to integrate into your system. It supports most protocols used in commercial and military applications and can be easily integrated into existing fiber, wireless or IP networks. It can also interface with VMD, radar, UGS or other trigger sensors for a “slew to cue” solution.



FEATURES

- Ease of integration
- Continuous optical zoom 100-550mm
- See objects in complete darkness and adverse weather
- VisionSense™ technology combine infrared and CCD imagery in real time
- Continuous 360 panning



NEW THREATS.
NEW THINKING.

SPECIFICATIONS

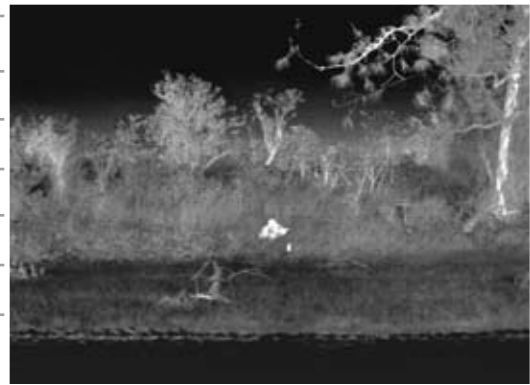
Video Output	RS-170 (NTSC) or CCIR (PAL)
Control Interface	RS-232, RS-422, RS-485
Ethernet Interface	IEEE 802.3 10/100BASE-T
IP Address	Static or Dynamic
Power Input	10-28 VDC
Power Consumption	<35 Watts (nominal)
Operating Temperature	-40° to +60° C

Thermal Camera

Detector	Cryocooled Indium Antimonide (InSb)
Frame Rate	60Hz rate
Resolution	320 x 240
Spectral Response	MWIR
Lens Focal Length	100 - 550mm Continuous Optical Zoom
Digital Zoom	2x and 4x
Resolution	320 x 240
Focus	Automatic (optional)
Gain / Level Controls	Automatic or Manual
System Ready Time	<5 minutes, nominal
NETD	<25 mK
f/number	f/3.5
Field of View	5.5° to 1.0° (100 to 550mm)
One Meter Single Pixel	
Resolution	3.5 km @ 100mm, 19.2 km @ 550mm
Spectral Response	MWIR
Lens Focal Length	100 - 550mm Zoom Lens with Continuous Optical Zoom
Digital Zoom	2x and 4x
Focus Automatic	(optional)

CCD Camera

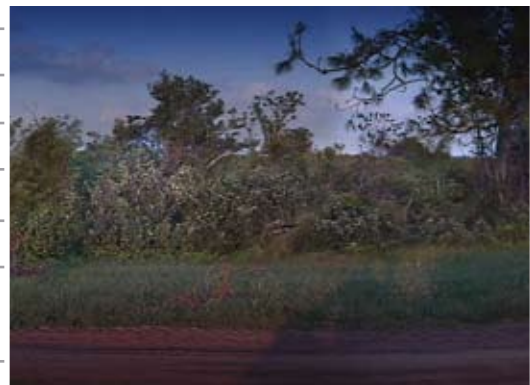
CCD Camera	Narrow FOV 2.0° Wide FOV 42°
Image Stabilization	Yes
Zoom	Optical: 26x Digital: 12x, Total: 312x
Minimum Illumination	2.0 lux/1/60 sec (NTSC)



 Thermal Image



 VisionSense™



 CCD Image



Zone Advanced Protection Systems
Unit 8/10 Gladstone Rd
Castle Hill, NSW 2154

S: 1 300 665 123
F: 02 9899 2705

E: sales@zoneaps.com.au
W: www.zoneaps.com.au

